

Spencer County Agriculture & Horticulture Newsletter



University of Kentucky
College of Agriculture,
Food and Environment
Cooperative Extension Service

Cooperative Extension Service

Spencer County
PO Box 368
Taylorsville KY 40071-0368
(502) 477-2217
Fax: (502) 477-1343
extension.ca.uky.edu

October 2022

Welcome to fall. As I drive around the county, I see that the leaves are starting to turn a little bit. We now have the cool mornings and warm afternoons. The corn and soybeans are starting to be harvested. Houses are being decorated with corn shocks and pumpkins. The daylight is getting less and less each day.

These are just some of the things that I enjoy about this time of year. This is the time of the year that we all can harvest the fruits of our labor that we've done throughout the year. I hope you can enjoy the next few weeks of fall.

As always, feel free to call or email me if you have any questions.

Sincerely,

Bryce Roberts,
Spencer County Extension Agent for
Agriculture and Natural Resources

More Information

As always, if you need more information, feel free to **call me** at 477-2217.

You can also **email me** at broberts@uky.edu or you can **visit my website** to view archived newsletters and news articles. The web address is: www.spencerextension.com



Farmers Market Now Open

The Taylorsville/Spencer County Farmers Market is now open and will be open beginning at 8 a.m. until noon or so on Saturdays. Some of the vendors may stay past noon if there is a crowd. The market will be open every Saturday (rain or shine) until the end of October. It is located at 751 Taylorsville Road next to Fresh Take Market.

There are several vendors selling a wide variety of products, including meats, cheeses, jams, jellies, honey, breads, goat milk soaps and lotions, candles, and other produce. Make sure you support our local producers...they are the ones that are growing what you're buying.

If you are interested in becoming a vendor (small producers are welcome), visit our website and click on Farmers Market for an application. For more information on the market, feel free to contact Sandi Deutsch at 502-252-1400.



Cooperative Extension Service
Agriculture and Natural Resources
Family and Consumer Sciences
4-H Youth Development
Community and Economic Development

Educational programs of Kentucky Cooperative Extension serve all people regardless of economic or social status and will not discriminate on the basis of race, color, ethnic origin, national origin, creed, religion, political belief, sex, sexual orientation, gender identity, gender expression, pregnancy, marital status, genetic information, age, veteran status, or physical or mental disability. University of Kentucky, Kentucky State University, U.S. Department of Agriculture, and Kentucky Counties, Cooperating.

LEXINGTON, KY 40546



Disabilities
accommodated
with prior notification.

Master Gardener Program

After last month's article on our upcoming Master Gardener program, I want to say thanks to those of you who have expressed interest in participating in the program.

We have more details for you at this time. The program will begin on January 9, 2023, and will run every Monday evening



Kentucky Extension Master Gardener

(except for January 16) until April 17 and will begin at 6 p.m. Some of the topics include Soils, Botany, Woody Plants, Turf Care, Entomology, Plant Pathology, Fruits, Flowers, Indoor Plants, and Water Quality, among other topics.

Cost for the program will be \$75 and covers all course materials and supplemental materials that you may need.

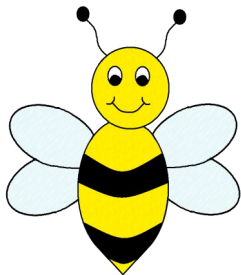
As part of the program, you will be required to donate back the approximate 40 hours of the course to our local extension programs and to the community within the year. We have plenty of projects to help you achieve these hours.

There is an application that must be filled out and returned to our office with your fee. **Registration deadline is December 9th.** Due to the amount of course material, no registrations will be accepted after December 9th.

If you are interested in participating in the Master Gardener Program class or have any questions, please contact Bryce Roberts at the Spencer County Extension Office at 502-477-2217 or broberts@uky.edu.

Beekeepers Association Meetings

Just a quick reminder that the Spencer Co. Beekeepers Association holds monthly meetings at our office on the 2nd Tuesday of each month. They begin at 6:30 p.m.



Soil Sample Now

As we are moving into fall, now is the best time to sample your fields, gardens, or lawns to see what type and how much fertilizer you need to make the soil as productive as possible. For each sample you want to submit, we need at least one pint (sandwich bag) of dry soil 4-8 inches below the soil surface. Please put your name and sample ID (north lawn, hayfield 2, etc.) on each bag.

Bring those in now so that you can get the results more quickly and in some cases go ahead and apply the fertilizer now so that the soil will be ready for your yard or crops.

This is a free service provided by the Spencer Co. Conservation District. Thanks to them for sponsoring the soil sampling program.

Our office is open normal business hours, but you have the option to drop off your samples anytime you like.

As you pull into our parking lot, please go to the right to the back of our building. You will then see our pavilion and on the pavilion, you will see a blue tub to the right of the double doors. Inside the tub, you will find some paperwork that you will need to fill out so that we can properly test your soil. Place the paperwork and samples back into the tub.

I'll review the results and mail them back to you in 2-3 weeks.

Ag Census Coming Up

Kentucky's farmers will soon have the opportunity to be represented in the nation's only comprehensive and impartial agriculture data for every state and county. The U.S. Department of Agriculture (USDA) will mail the 2022 Census of Agriculture to 125,000 Kentucky ag producers this fall.

The 2022 Census of Agriculture will be mailed in phases, starting with an invitation to respond online in November. Farm operations of all sizes, urban and rural, which produced and sold, or normally would have sold, \$1,000 or more of agricultural product in 2022 are included in the ag census.

Collected in service to American agriculture since 1840, the Census of Agriculture tells the story and shows the value of Kentucky's agriculture. It highlights land use and ownership, producer characteristics, production practices, income and expenditures, among other topics. For more information visit www.nass.usda.gov/AgCensus

EQIP Information

What is the Environmental Quality Incentives Program?

The EQIP program assists farm and forest production and improves and protects environmental quality. The Farm Bill program offers financial and technical assistance to help agricultural producers voluntarily implement conservation practices that keep lands healthy and productive.

The Plan

The Natural Resource Conservation Service (NRCS) assists applicants with developing conservation plans for EQIP enrollment. Plans include various conservation practices that meet NRCS standards and the applicant's objectives.

Applications are ranked based on the level of conservation benefits that will be achieved in meeting those objectives.

The Professionals

NRCS offers expert analysis and recommendations to help you plan and design conservation improvements for your farm.

Our technical assistance is one-on-one, personalized advice and support- and is offered free of charge to you.

How to Apply

Landowners or agricultural producers may apply by contacting their local USDA service center in the county in which the land is located.

EQIP applications are accepted year-round. Cutoff dates are scheduled to allow for current year ranking and selection of applications for funding. State and local ranking criteria are developed considering annual stakeholder advice.

Something for Everyone

EQIP offers assistance for all types of agriculture including:

Conventional and Specialty crops

Wildlife and Forestry

Historically underserved farmers*

Livestock operations

*Special payment rates available for those who qualify under beginning, socially and economically disadvantaged criteria.

Popular Practices:

Field Borders, Cover Crops, Grazing Management, Livestock Watering Systems, Manure Management (Including runoff protection and storage structures), Pollinator and Wildlife Habitat, Exclusion and Interior Fencing, High Tunnel, Forest Stand Improvement (FSI)

How Contact Us:

For more information or to sign up, contact the Bardstown NRCS Field Office.

Call: (502) 348-3363 ext: 3 Or stop in at: 2001 Buchanan Blvd, Bardstown, KY 40004

We are open weekdays 8:00am- 4:30pm.

KDFW Biologist Info

My name is Kiersten Bowling, and I am the Kentucky Department of Fish and Wildlife Resources Wildlife Biologist/Private Lands Biologist/Farm Bill Biologist for the Lebanon Work Unit, and I'm based out of the Bardstown USDA office.

I am originally from Southeastern Kentucky, and I graduated with my bachelor's degree in Wildlife and Fisheries Biology from Lincoln Memorial University in Tennessee. I have always been an avid outdoorswoman and enjoy hunting, fishing, and going on hikes.



I assist the USDA offices with the Environmental Quality Incentives Program (EQIP), FSA with the Conservation Reserve Program (CRP), and I also do technical guidance visits to assist landowners with improving their wildlife habitat. My counties include Bullitt, Spencer, Nelson, Washington, Marion, Mercer, Boyle, Lincoln, Garrard, and Casey.

To find out about improving your habitat and for assistance, feel free to call, text, or email me and we will get started! I look forward to working with you!

Email: kiersten.bowling@ky.gov

Cell Phone: (502) 331-5829

Kentucky Beef Conference

The annual KY Beef Conference will be held on October 17th beginning at 5:30 p.m. with registration. It will be in person at the Fayette Co. Extension Office and online as well. If you plan to attend in person, please RSVP to 859-257-5582 by October 10th. To register for just the online meeting, follow this link to pre-register:

<https://forms.gle/JfvpRkiQ1Hx9ocnh9>

Please call for more information on this program.



University of Kentucky
College of Agriculture,
Food and Environment
Cooperative Extension Service

Spencer County
PO Box 368
Taylorsville, KY 40071-0368

RETURN SERVICE REQUESTED



Pumpkin Apple Muffins

1 ¼ cups all-purpose flour	½ teaspoon ground ginger	1 ½ cups fresh pureed pumpkin
1 ¼ cups whole-wheat flour	½ teaspoon ground nutmeg	½ cup canola oil
1 ¼ teaspoons baking soda	1 ¼ cups honey	2 cups Granny Smith apples, finely chopped
½ teaspoon salt	2 large eggs	
1 ½ teaspoons ground cinnamon		

Preheat oven to 325 degrees F. In a large bowl, **combine** flours, baking soda, salt and spices. In a small bowl, **combine** honey, eggs, pumpkin and oil; **stir** into dry ingredients just until moistened. **Fold** in apples. **Fill** greased or paper lined muffin cups, two-thirds full. **Bake** for 25 to 30 minutes or until muffins test done. **Cool** for 10 minutes before removing from pan.

Note: Can substitute two cups granulated sugar for honey, decrease baking soda by ¼ teaspoon and increase oven temperature to 350 degrees F.

Yield: 18 muffins

Nutritional Analysis: 200 calories, 7 g fat, 0.5 g saturated fat, 35 mg cholesterol, 160 mg sodium, 35 g carbohydrate, 2 g fiber, 20 g sugar, 3 g protein



Buying Kentucky Proud is easy. Look for the label at your grocery store, farmers' market, or roadside stand.